

A COLONY OF HONEY BEES



1 Queen Bee (female)



3,000 Drones (male)



50,000 Worker Bees (female)



Drone



Queen



Worker

Why do Bees swarm?

Swarming is the natural way that a colony of honey bees reproduces.

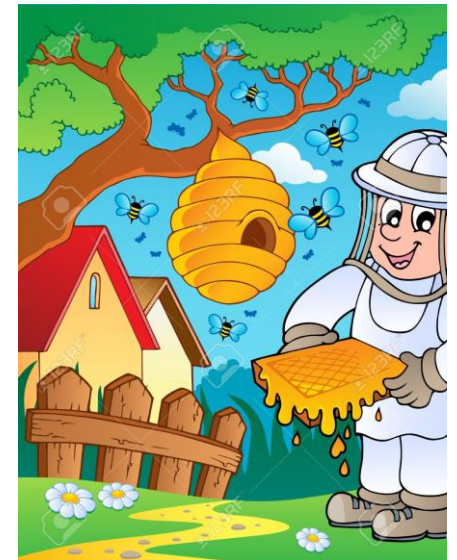
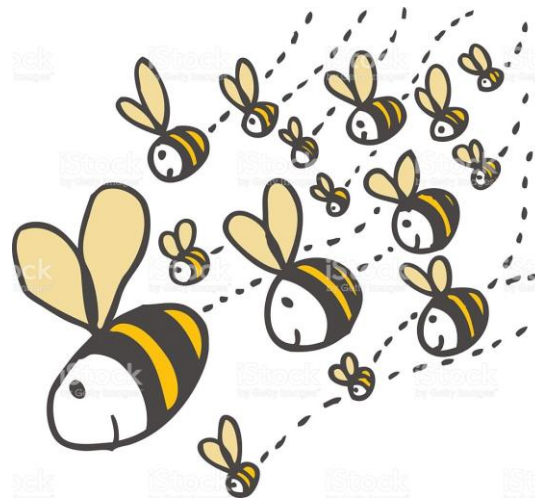
It happens when a new queen has been formed and is almost ready to emerge from her cell.



If you see a resting swarm, then please contact a local beekeeper who will come and collect it



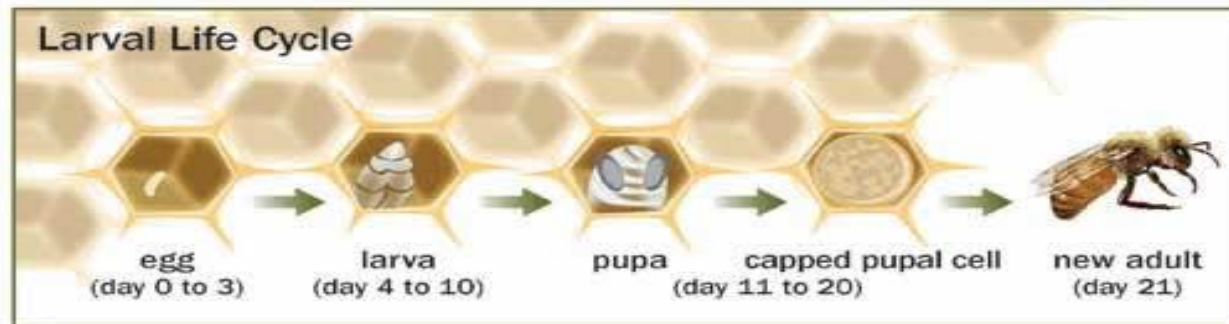
It's the old queen & the flying bees that leave to find a new home



How long does a bee live?

In the summer a worker bee only lives for about 40 days.

A queen can live up to five years; however for the beekeeper a queen is past her prime in her third year.



Illustrations: Marguerite Meyer

Honey



One hive can produce 60 lb (27 kg) or more in a good season, however an average hive would be around 25 lb (11 kg) surplus.



Do The Bees Miss The Honey That Is Taken?
No. A strong colony can produce 2-3 times more honey than it needs. If necessary the beekeeper can feed sugar syrup in the autumn to supplement for the loss of honey.

Why do bees make honey?

Honey bees are special in that they overwinter as a colony, unlike wasps and bumblebees.

The colony does not hibernate but stays active and clusters together to stay warm.

This requires a lot of food, which is stored during the summer.

Although a hive only needs 20-30 lb of honey to survive an average winter, the bees are capable of collecting much more, if given storage space.



Bees fly about 55,000 miles to make just one pound of honey, that's 2.2 times around the world.



How Do Bees Make Honey?

Bees take nectar, which is a sweet sticky substance exuded by most flowers and mix it with enzymes from glands in their mouths. This nectar/enzyme mix is stored in hexagonal wax honey comb until the water content has been reduced to around 17%.



When this level is reached, the cell is capped over with a thin layer of wax to seal it until the bees need it.



How Do Bees Make Wax?

The youngest bees cluster in large numbers to raise their body temperature. Wax-producing glands under their abdomens slowly secrete slivers of wax about the size of a pinhead. Other worker bees 'harvest' these wax scales and take them to the part of the hive requiring the new wax.



Bees use about 6 lb of honey to produce 1 lb of wax.

We use Bees Wax to make....



What Is Royal Jelly?

Royal jelly is the food fed to queen bee larvae. It is a creamy white colour and is very rich in proteins and fatty acids. It is produced by the mouth glands in young bees. Each queen needs only a teaspoon of royal jelly. Many magical properties are claimed of royal jelly.

