



Bees Love Cottage Garden Flowers & Herbs.....

Sun flowers	Sedum	Polemonium
Corn flowers	Honeysuckle	Nigella
Lupin	Mints	Yellow rattle
Delphinium	Anise Hyssop	Comfrey
Lavendar	Viper's Bugloss	Verbena
Alliums	Phacelia	Clovers
Red Hot Poker	Solidago	Rosemary
Bell Flower (Campanula)	Stachys byzantina	Fleabane
Aquilegia	Verbascum	Beach aster
Foxglove	Origano/Marjoram	Salvia
Hollyhock	Artichoke	Poppy
Iris	Heather	
Perennial Geranium	Astrantia	
Wallflower	Pulmonaria	
Rudbeckia	Echinacea	
Cosmos	Bluebell	
Scabious	Snowdrop	
Borage	Ajuga	
Nasturtiums	Eryngium	
Chives	Teasel	
Thyme	Liatris	
Sage	Monarda	



Bee Facts

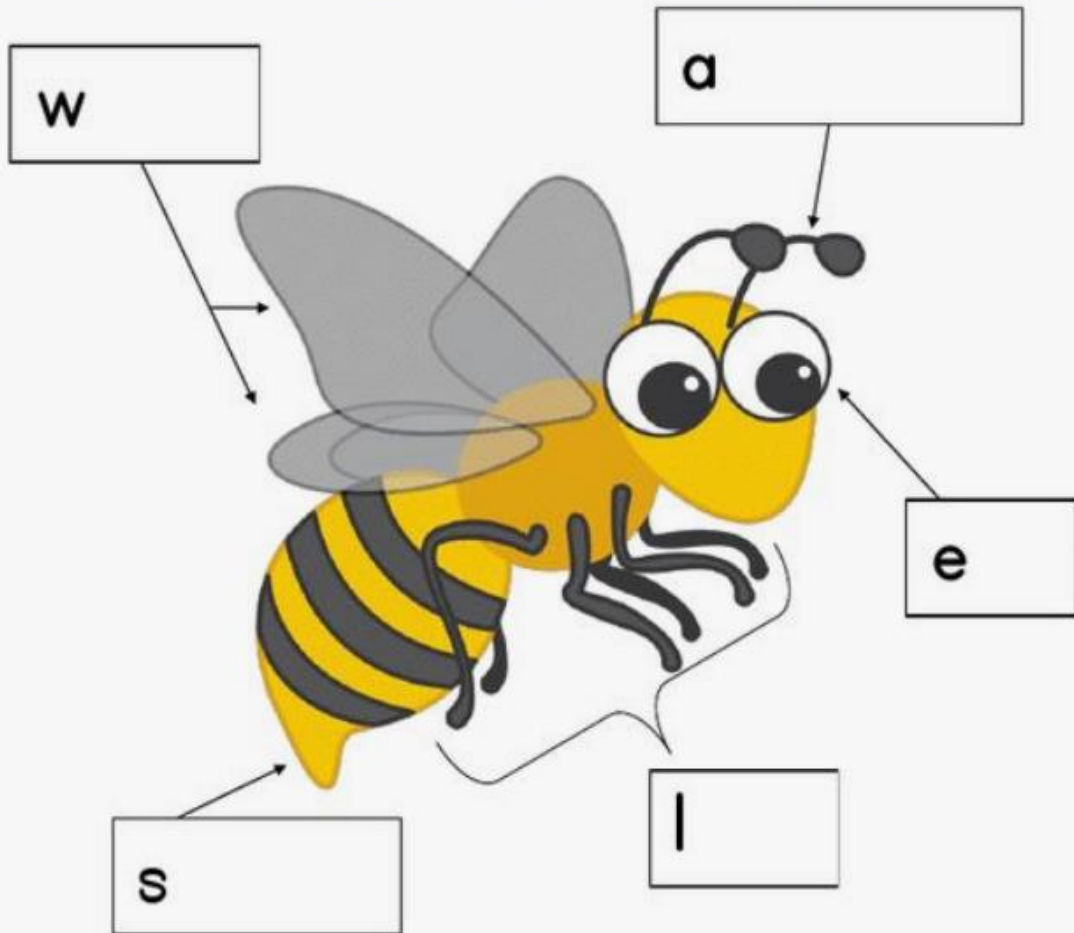


- ☀ Honey Bees communicate with each other through a special 'waggle dance' to give the direction and distance of the nearest flowers. The bigger the waggle, the better the food!
- ☀ Bees collect both nectar and pollen from plants and store them in their hives to feed the queen, the workers and the larvae.
- ☀ The bees bring in pollen in special hairs in their legs (called pollen sacs) - the colours vary depending on which flower the bees have been on.
- ☀ When a worker bee finds a new flower with nectar, they pass it on to another worker bee when they get back to the hive. They face each other to do this.
- ☀ Each hive has a leader, the 'Queen Bee' who can be recognised by her larger size.
- ☀ A single hive contains an impressive 40,000 - 45,000 bees.

Fun Facts about Honey Bees

- » Bees are the only insect in the world that make food that people can eat
- » Honey contains all of the substances needed to sustain life, including enzymes, water, minerals and vitamins
- » Eating honey can help you smarter! It is the only food to contain 'pinocembrin' that is an antioxidant that improves brain function
- » One bee will only make 1/12 of a teaspoon of honey in its entire life
- » Many plants rely on insects like bees in order to be pollinated; which is why they provide nectar to say thanks
- » A colony of bees can contain between 20,000 and 60,000 bees, but only one queen bee
- » A bee's wings beat 190 times a second, that's 11,400 times a minute!
- » Worker bees, who are all female, are the only ones who will attack you, and only if they feel threatened
- » It has been estimated that it would take 1,100 bee stings to produce enough venom to be fatal
- » Each colony smells different to bees, this is so they can tell where they live!
- » It would take 1,100 bees to make 1kg of honey and they would have to visit 4 million flowers
- » There are 900 cells in a bee's brain
- » The queen bee will lay around 1,500 eggs a day
- » Bees have two separate stomachs; one for food and another just for nectar
- » Honey has natural preservatives so that it won't go bad
- » A third of all the plants we eat have been pollinated by bees
- » Bees have been around for more than 30 million years
- » Bees communicate by smells called 'pheromones' and by performing special 'dances'
- » Bee keepers only take the honey that the bees do not need, but this can be as much as 45kg from one hive!
- » There are lots of different types of honey which taste different depending on the flowers used to make it

Bee Parts



Directions: Cut out the words below and have your child glue them in the correct spots.

eye

wings

legs

antennae

stinger

Honey bee key facts

The honey bee is a remarkable insect in many different ways. The biology of the honey bee reveals just how special it is and what makes it different to other insects. Here you can learn more about the features of the honey bee and some honey bee key facts about what makes it so special...

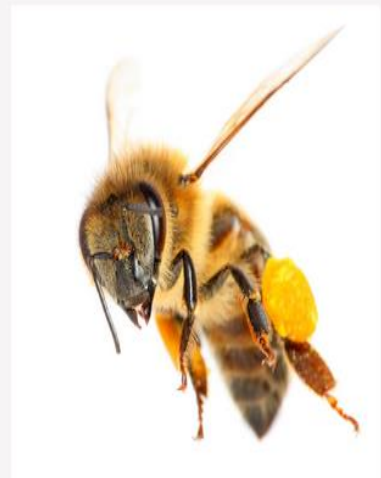
Six legs, four wings five eyes!

- **Legs** – The honey bee has three pairs of legs, six legs in total. However, the rear pair is specially designed with stiff hairs to store pollen when in flying from flower to flower. This is why a heavily laden worker bee is seen to have two golden pouches in full season. The front pair of legs has special slots to enable the bee to clean its antenna.
- **Wings** – The honey bee has four wings in total. The front and rear wings hook together to form one big pair of wings and unhook for easy folding when not flying.
- **Eyes** – Incredible as it may seem, the honey bee has FIVE eyes, two large compound eyes and three smaller ocelli eyes in the centre of its head.

The bees knees – fact or fiction? We've all heard the popular expression 'It's the bees knees', meaning something which is the best or has everything one could wish for. According to the Oxford English Dictionary, the phrase originated in the late eighteenth century meaning something very small. However, its current meaning is believed to stem from American slang in the same way as "the cat's whiskers". Although bees have legs with joints like any insect, they do not have a knee cap and, apart from the articulated nature of the joint, they do not technically possess knees.

Honey bee, wasp or bumble bee? It is commonly asked how one can tell apart these three insect types. Here are some key distinguishing traits to help you:

- **Honey Bees** are seen as the highest form of insect life, living in a well-organised colony without the need to hibernate. Indeed, in winter they can survive in the hive at high temperatures while outside the temperature is several degrees below zero! Over winter, honey bees cluster together and using their bodies to generate heat. This cluster is about the size of football, with bees taking turns to be on the cold outside. Of course, honey bees also produce HONEY! They produce and store it in wax comb – and they use the same hive from one year to the next. The typical maximum population of a colony is between 35,000 and 50,000 bees.



How to Draw a Bee in 11 Easy Steps



Step 1: First, draw a box-like shape



Step 2: Next, draw the head, eyes and antenna



Step 3: And then, draw the bottom part of the body



Step 4: Draw segments on the body



Step 5: Add the wings on both sides



Step 6: Begin putting some legs



Step 7: Add another leg on the side



Step 8: Draw another leg below



Step 9: Draw another leg on the opposite side



Step 10: Continue adding the legs



Step 11: Add the last leg

It's done! Your very own bee drawing!

Bees Like Wildflowers.....

So why not.....



Include some in the flower border



Create a mini-meadow



Add a few into your lawn



Sow a few wildflower seeds into pots



Ask your local council to create wildflower verges



Try:

- Cowslip
- Bird's Foot Trefoil
- Sainfoin
- Vetches
- Clover
- Teasel
- Dandelion
- Dead Nettle
- Yellow Rattle
- Selfheal
- Knapweed
- Betony
- Red bartsia
- Cat's ear
- Burdock
- Thistles
- Angelica
- Woundwort
- Field Scabious
- Poppy